



Looking back, looking ahead...

A summary of what Letchworth Garden City Heritage Foundation has achieved in the last year and what's happening next.



www.lgchf.com

Year 13 Review

Letchworth Garden City Heritage Foundation

1 October 2007 to 30 September 2008

The Foundation's mission is to create, maintain and promote a vibrant, quality 'environment' in the Garden City for all those who live in, work in and visit the world's first Garden City.

The Foundation owns and manages the 5,500-acre Garden City Estate comprising offices, shops, factories, houses, farms, community amenities and land. Income generated from property, farming and other activities is ploughed back into the Garden City in two ways: reinvestment to maintain the fabric of the Estate and its landscape; and funding for a wide range of charitable enterprises and endeavours in Letchworth Garden City.

Charitable Objects

The Foundation has six Charitable Objects laid down by Parliament. These are listed below:

- 1 Promoting the preservation of buildings and other environmental features of beauty or historic interest within Letchworth Garden City.
- 2 Providing or assisting in the provision of facilities for the recreation or other leisure activity of the local community in the interests of social welfare with the object of improving their conditions of life.
- 3 Promoting the advancement of education and learning within Letchworth Garden City.
- 4 Promoting the relief of poverty and sickness within Letchworth Garden City.
- 5 Supporting any charitable organisation having an office or branch in Letchworth Garden City.
- 6 Promoting any other charitable purposes for the benefit of the local community.

Incoming Resources	£'000
Property Income	8,013
Other Activities	2,777
Activities in furtherance of charity's objects	165
Investment income	1,939
Total Incoming Resources	12,894
Resources Expended	£'000
Property and related costs	4,604
Costs of other activities	4,090
Interest payable	3
Charitable Activities	3,303
Governance Costs	390
Total resources expended	12,390
Net incoming resources	504
Other recognised gains and (losses)	(21,470)
Net movement in funds	(20,966)
Breakdown of Charitable Activities	£'000
Plinston	634
Ernest Gardiner Day Hospital	321
First Garden City Heritage Museum	216
Minibus service	82
Environmental improvements	337
Community Information	85
Miscellaneous Charitable Expenditure	211
Grants payable	569
Support costs	848
Total	3,303

Notes:

1 Incoming resources and resources expended figures shown under the headings 'other activities' comprise the results from the Foundation's trading subsidiaries L.G.C. Farms Ltd, L.G.C. Services Ltd, Broadway Cinema Ltd and Garden City Technologies Ltd.

2 Details of the Foundation's charitable objects can be found above.

These figures are taken from the Foundation's Report and Accounts to 30 September 2008. This document is available to download from www.lgchf.com, alternatively printed copies can be requested from the Marketing & PR department on 01462 476057.

The Foundation's Board of Management is required to prepare accounts for each financial year which adhere to UK Accounting Standards and comply with the Industrial and Provident Societies Act 1965, the Friendly and Provident Societies Act 1968, the Letchworth Garden City Heritage Foundation Act 1995 and the Statement of Recommended Practice, Accounting and Reporting by Charities (SORP 2005).

Front cover image: New 'Design Standards' for Garden City homes were published in 2008.

The Chairman's Statement

It has been my good fortune to be elected by my colleagues to serve as Chairman of the Foundation and Board of Management since 2004. The Foundation is responsible, by Act of Parliament, for the ownership and management of the Garden City Estate of 5,500 acres and its development and improvement. This will be my fifth and final statement in the Annual Report and Accounts.

The past five years have been challenging, stimulating and successful. Our income has grown, our charitable distributions have increased and the facilities for sport, recreation, leisure and community and social activities have made substantial advances. The Arts Centre has been successfully established in the town centre. This year, the Broadway Cinema, now wholly owned by the Foundation, has been refurbished and had a new screen added at a cost of about £1 million. None of this could have happened without a high standard of management of the Estate.

The regeneration of the award winning Spirella Building and the opening of Morrison's Store a decade ago marked the first phase of the town centre improvement. We are now on the threshold of a much needed investment in the revitalisation of the town centre. Although it has not been possible to pursue these projects as speedily as we wished, I have every confidence that they will help to create the circumstances in which

the Garden City is among the first to benefit from an upturn in the economy. In the meantime, it is vital that we all support all our local businesses by doing as much shopping and spending in Letchworth as we reasonably can.

A major initiative which we undertook concerned the review of Design Guidance for residents who are contemplating making an external change to their Letchworth home and obtaining Landlord's Consent. After a thorough 18 month programme, involving extensive independent research by Ipsos MORI, taking into account the views of Garden City residents, previous applicants, building and other professionals including solicitors and estate agents, the Foundation published three separate "Design Standards" – one for each of the new "Character Areas" in the Garden City. The new Standards have been well received and I am delighted to say that we have had many positive messages of support from the public.

The success of the Foundation in developing and improving the Estate over the last 14 years could not have been achieved without the outstanding skill, experience of city regeneration projects, drive and commitment of our Director General, Stuart Kenny. My job as Chairman would have been impossible without his support and advice. In turn, he is supported by a strong and equally committed team. On behalf of the Board

and Governors I thank all the directors and staff for their work.

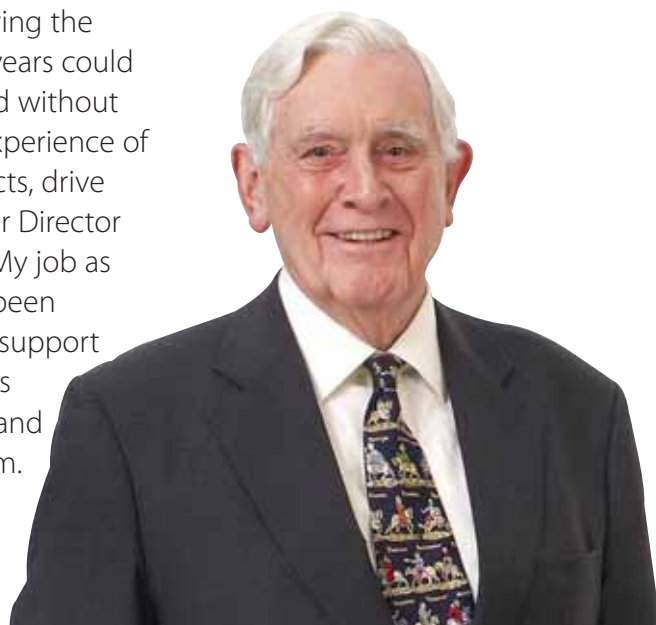
In 2008 Davinder Johal, Peter Lennie, Paul Palmer and Stephanie Turner were reappointed as Governors. We welcomed Arthur Creighton and Margaret Pierce as new Governors. Tony Maynard-Smith retired and we thank him for his contribution as a Governor. I also wish to thank my fellow Board members and Governors for their support during my tenure.

As alluded to earlier, the economic challenges our country faces will resonate in the Garden City, as elsewhere. However, by working together within the unique structure we enjoy, I am confident that the damage to our businesses and to the community at large can be mitigated and indeed, we can prepare for a more prosperous future.

Alan Scouller

Chairman

10 February 2009



2007-08 Review

Good progress was made in relation to the priorities set out in the Foundation's Business Plan.

1 Progress planning applications submitted in respect of street scene improvements and major redevelopment of The Wynd.

Achieved. Planning permission for the Street Scene improvements was secured on the 28 March 2008, with a resolution to grant planning permission for The Wynd redevelopment following on 30 June 2008, subject to legal agreements.

2 Submit a planning application for the proposed major redevelopment of Arena Parade.

Not achieved. The planning application for the redevelopment of Arena Parade has been delayed and is now due to be submitted in 2009.

3 Conclude public consultation for the residential 'Design Guidance' leading to the publication of revised 'Guidance'.

Completed. All consultation was completed within the financial year. The new 'Design Standards' were subsequently launched to the public in November 2008.

4 Work in partnership with North Hertfordshire Homes to build new homes based on designs submitted as part of the Tomorrow's Garden City international housing design competition.

The 'Tomorrow's Garden City' project continues to move forward, with outline planning permission achieved within the financial year. A detailed planning application was subsequently submitted by North Hertfordshire Homes in November 2008.

5 Progress the creation of new rugby and football playing pitches at Baldock Road to meet the growing requirements of Letchworth Garden City Rugby Club and Letchworth Garden City Eagles Football Club.

Achieved. Fencing works have been completed, preventing trespassing and damage to the pitches and the adjoining Foundation owned path has been upgraded.

An informal planning application for the main elements of the scheme has been submitted.

6 Sustain funding for the Foundation's charitable objects.

Achieved.



Baldock Road footpath

The Director General's Report

2008 has been an extremely challenging year for the Foundation yet one in which we continued to make solid progress.

Building on last year's excellent results, further increases in both income and charitable distributions were achieved.

Income grew by £1.3m to £12.9m, an outstanding performance, given the difficult trading conditions experienced by so many of our customers. A £209,000 increase lifted charitable distributions to a new record high of £3.3m for the year.

Less welcome, although, given market conditions, inevitable, was a £21m reduction in the value of the Foundation's property portfolio, which had been growing steadily and substantially over the years. We look to re-build that value as the economy improves.

The current economic climate makes it all the more imperative that we move forward with our plans for major reinvestment in Letchworth town centre. In so doing, we look to continue to grow our income while safeguarding our Balance Sheet.

Our reinvestment plans received a significant boost when two planning applications secured consent – our Street Scene improvements scheme, in March, and our redevelopment proposals for The Wynd, in June 2008.

However, it is disappointing that, for reasons beyond our control and almost 12 months on from gaining planning approval for the first scheme, we have been unable, as of yet, to make a start on-site.

I believe that the Heritage Foundation is uniquely placed to make this necessary investment at a time when others are finding such schemes more difficult to fund. In such difficult economic times people will be reassured by seeing positive change 'on the ground'.

In the meantime, across our range of disparate businesses we continue to try to offer good service and value for money. To that end, many businesses are welcoming our initiative to offer monthly rather than quarterly billing and the swift payment of suppliers.

I thank my Directors and staff for their first-class contributions throughout the year.

In particular, I would like to place on record my appreciation for the sterling work of Alan Scouller, the Foundation's Chairman, who, under our Rules, will be required to step down from the Foundation during 2009. Alan has worked hugely hard for the Foundation and I have been grateful for his commitment, energy and wise counsel.

Stuart Kenny
Director General
10 February 2009





Early Garden City



Later Garden City

Love living in Letchworth Garden City...

The world's first Garden City has a special character, a unique environment that residents are proud of and passionate about. Preserving that character is always a priority.

Thinking about making changes to the external appearance of your Garden City home?

You may be aware that since 1 January, 2009, the rules have been changed. Gone is the previous 'one size fits all' approach, replaced by **three new 'Character Areas'** each with their own set of 'Design Standards' depending on where you live.

Early Garden City

The pioneer years – 1903 to the 1920s.

Later Garden City

Homes built in the 1930s, 40s and 50s.

Modern Garden City

Homes built in the 1960s to present day.

The 'Standards' do not apply on the **Grange and Jackmans** estates.

The changes effected reflect the **views of many Garden City residents** polled in an independent survey.

Reflecting their historical importance, older homes in the Early and Later Garden City 'Character Areas' are subject to more rigorous 'Standards'.

In contrast, 'Standards' for **modern homes** allow greater flexibility and the use of modern materials.

Finding out the 'Character Area' for your home couldn't be easier, all you need is your **house number and postcode**.

Simply visit the 'Design Standards' website at www.lgchf.com/designstandards Enter your details and you will be presented with the '**Character Area**' for your home and the corresponding 'Design Standards'. Alternatively call 01462 476017 and we'll do it all for you over the phone.



Modern Garden City



The 'Design Standards' were launched in November 2008 with a major press campaign, overview booklet - delivered to every affected home and an event for building professionals.

To obtain the 'Design Standards' for your home visit www.lgchf.com/designstandards or call 01462 476017

Here to help

We know planning changes to your home can at times be **complicated and even stressful**, that's why we're here to help.

We can support you through **every step** of the application process; in fact we'd like to help from the very start.

Whether it's **just an idea, or a hand drawn sketch**, we can advise you on your next move and importantly ensure your plans meet the 'Design Standards'.

Did you know?

'Design Standards' for the Later and Modern 'Character Areas' now allow for greater flexibility regarding sustainable technologies such as solar panels.

Helping you with the costs

We know home improvements can be expensive so we've developed a new **range of grants** to help.

The levels of grants available have been **weighted to reflect the 'Standards'**. If we're requesting that you use more expensive materials, we offer a larger grant to help offset those costs.

Grants are available for a wide range of works including **restoration or replacement of doors, windows, roofing tiles and chimneys**.

Plus the **reinstatement of greenery** including front garden works, removal of excessive hard standing and the reintroduction of trees and hedges.

Did you know?

Grants of up to £10,000 (70% of the cost) are available for the replacement or restoration of windows and doors, using original materials, in the Early and Later Garden City 'Character Areas'.

A big thank you

We'd like to say a big 'thank you' to all residents who allowed us to take photographs of their homes for inclusion in the 'Standards'. Nothing conveys a point better than a photograph of good work, after all, a picture does say a thousand words.



Howard Cottage – Home Support Worker with elderly resident

For the good of the community...

Choice Pregnancy Counselling benefited from £800 towards the cost of office equipment.

Choice provides **counselling and advice** for those facing an unexpected pregnancy.
Tel: 01462 683054
www.choicenorthherts.org.uk

With spring now here, its the perfect time to get out and **enjoy the fresh air**, and where better to do that than the Garden City Greenway.

Take in the sights and sounds of the season with a **country walk, jog or cycle ride**.



Visit the **new Greenway website** at www.greenway.org.uk

The Ernest Gardiner Day Hospital **cares for those recuperating from an illness or hospital stay**.

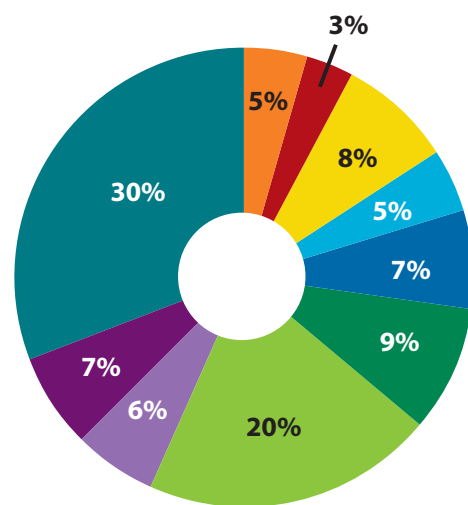
A unique facility in the Garden City, the hospital is funded by the Foundation, with an independent charity the **League of Friends**, fundraising to cover the costs of equipment.

The Day Hospital has expanded its activities to include **services within the community**, carrying out regular home visits offering a range of treatments.

2008 saw the completion of a study into the **'Health and Social Well Being of Seniors'** living in Letchworth Garden City.

The research was commissioned to identify areas where the Foundation and the Day Hospital's League of Friends could offer **grant funding or services to improve the quality of life** of Garden City Seniors.

Common Problems for Letchworth Garden City Seniors



- Access to services / social activities
- Benefits advice
- Form filling / Paperwork
- Handyman service
- Isolation
- Loneliness
- Mobility around the home / outdoors
- Poor financial situation
- Shopping
- Transport

The findings highlighted health, independent living, isolation, form filling and other needs as areas that could **benefit from additional support**.

We are now drawing up **proposals to help meet these needs**.

Howard Cottage Housing Association was awarded £70,000 towards its **Home Support Scheme**.

The scheme helps older Garden City residents to **maintain their independence** and stay in their own homes.

This funding allowed a **second Home Support Worker** to be hired, extending the reach of this very successful scheme.

In schools, we continue to support ongoing projects: **Art Start 5** and **ICT support** for primary schools and the **Differentiated Learning Strategy** in secondary schools.

400 pupils and 25 teachers across 3 schools are currently involved in a pilot project using hand held voting systems to create a **unique and dynamic learning experience**.

The Science and Celebration of Schools Music Festivals benefited **all 22 Garden City schools and over 2,200 children**.

The Junior Sports Leaders Award has now been launched at The Highfield and Fearnhill Schools. The Award **develops leadership skills**, by allowing young people to plan and lead their own sports activities.

50 Year Ten students helped to organise and run an **Athletics Festival in July and an Olympic Festival in September**.

The Tourist Information Centre (TIC) provides a range of services to residents and visitors **from information and advice on travel and UK holiday destinations to Garden City attractions and Shopmobility**.

Shopmobility is a popular and valuable service offering the **free use of mobility scooters and wheelchairs**.

For help planning your next family outing or holiday, visit the **TIC at 33-35 Station Road, call the team on 01462 487868 or log on to www.letchworthgc.com**

Our two minibuses continue to **'clock up the miles'** transporting residents to clubs and functions in the Garden City.

This free service for elderly and disabled residents recently extended its reach with **new shopping journeys into Letchworth Garden City Town Centre**.



Junior Sports Leaders

A Helping Hand

Over £63,000 in grants were awarded to local charities offering support to Garden City residents.



Home-Start provide **free, confidential** assistance to families in crisis.

Tel: 01462 441455
www.home-start.org.uk



The Citizens Advice Bureau offers **valuable free advice** for people dealing with money worries, legal issues and other problems.

Tel: 08456 88 98 97
www.citizensadvice.org.uk



Letchworth Mind provides a **drop in centre and day trips** for Garden City residents that suffer from mental illness and learning difficulties.

Tel: 01462 631132
www.mind.org.uk



Herts Young Homeless Group works to **support young people** who are homeless or are at risk of homelessness.

Tel: 01707 251384
www.hyhg.org



Leisure time in the Garden City...

Coming soon to Broadway Cinema, all the latest blockbusters including Star Trek, Terminator Salvation and Harry Potter and the Half Blood Prince. **All tickets Monday to Thursday and Friday until 5pm, are just £3.95.**

The Cinema **joined forces with the First Garden City Heritage Museum and Plinston** to deliver a series of events supporting the Cinema in Letchworth Garden City exhibition.

Over **160 people put their film trivia to the test** in a Movie Quiz and **385 people gained a unique insight into cinema life**, past and present with behind the scenes tours of Broadway Cinema.

To find out **what's showing now** at Broadway Cinema or to book tickets visit **www.broadway-cinema.com** or call 01462 681088.

Do you have fond memories of your school days in Letchworth Garden City? If so, a visit to the First Garden City Heritage Museum's latest exhibition is a must.

Running from the 28 March to 6 June, **'School Days'** looks at the history of schools in the Garden City through the eyes of former pupils.

Looking ahead to the warm summer months, the Heritage Museum opens its doors for an exhibition on **gardens and open spaces** (20 June to 31 August).

Supported by the Heritage Foundation, Letchworth Arts Centre continues to offer a **fascinating array of exhibitions, events and classes.**

Whether you're a **budding artist, fashion designer or music fan**, the Arts Centre has something for you. There's a great range of kids' activities too.

To find out more visit **www.letchwortharts.org** or call **01462 670788**

A year on from launching 'Sporting Success' to support sports coaching, a total of £31,763 in grants has been awarded to nine clubs including **Academy Badminton, Baldock & District Canoe Club and Letchworth Garden City Rugby Football Club.**

If your club could benefit from **assistance with coaching** visit www.lgchf.com/sportingsuccess to find out more.

The Spirella Ballroom hosts a range of events from **ballroom dancing to school proms, conferences and weddings**.

Available for hire, The Spirella Ballroom is the **perfect setting for that special celebration**.

Visit www.spirella.com or call **01462 650136** to find out more.



Weddings – Spirella Ballroom

Standalone Farm is now **open for the season until the end of October**.

A great family attraction, on your doorstep. This working farm will entertain the kids for hours. Family season tickets available.

For more information visit www.standalonefarm.com or call **01462 686775**

Norton Community Archaeology Group **spent the summer digging** in search of a medieval house and Roman features at Church Field.

To find out more about the group's discoveries visit

www.nortoncommarch.com

2008 was the **centenary year for Letchworth Natural History Society**, the Society received £1,500 towards the cost of two celebratory exhibitions at Letchworth Museum and Art Gallery.

If you haven't seen it already **there's still time** to see one of the exhibitions, running in the Natural History Gallery until 30 April.



Norton Community Archaeology Group

Coming soon to

PLINSTON

Letchworth Garden City's premier entertainment venue

VivaSantana
Friday 3 April

Magical Musical Tour 2009
Saturday 4 April

High Street Musical
Friday 17 & Saturday 18 April

UK Guns N' Roses
Saturday 25 April

The Bootleg Bee Gees
Friday 8 May

Limehouse Lizzy
Friday 15 May

Strawbs
Tuesday 19 May at Letchworth Arts Centre

John Coghlan's Quo
Friday 12 June

Legend, a Bob Marley tribute
Saturday 20 June

Jump, Jive & Wail with The Swing Commanders
Saturday 27 June

Music Quiz
Tuesday 28 July

Mad About The Musicals
Friday 11 September

The Jam DRC
Friday 25 September

Nine Below Zero
Friday 2 October

Whole Lotta Led
Friday 6 November

The Hamsters
Friday 13 November

Jean Genie
Friday 27 November

To book tickets visit www.plinston.com call 01462 672003 or visit the box office Plinston, Broadway, SG6 3NX

Mr Sharma of RS Fruit Shop,
now trading at 40 Broadway



Town Centre Revitalisation

Street Scene

Our proposed Street Scene works received **planning permission last March**.

Since achieving the permission we have experienced a number of delays gaining the necessary approvals to start work on-site. At the time of writing, we await Traffic Regulation Order approval which will determine whether we can get **construction underway in May 2009**.

Disruption will be kept to **an absolute minimum** and works will be suspended throughout the Christmas trading period.

The Street Scene scheme will **transform the shopping environment** in the Town Centre adding new seating, planting, water features and public art.



The Wynd

A resolution to grant planning permission for The Wynd redevelopment was also secured in June 2008. Work is now ongoing to **secure a suitable development partner** for the scheme.

As part of the redevelopment, we continue to make progress **acquiring Town Centre property interests**.

To date **92** property interests have been acquired in **The Wynd** with **32** for the **Arena**.

These acquisitions greatly **minimise the scale** of Compulsory Purchase Orders.

Away from the main redevelopment areas, **shop front restorations** have a key role in the revitalisation of the town centre. Works are now complete at 17 Station Road, with new shop fronts also planned for 56 Station Road, 3-5 Eastcheap and 38, 40 and 42 Leys Avenue.

Shop front grants of **up to £10,000** are available to town centre shop owners wishing to replace or repair their shop fronts.

For further information visit www.lgchf.com/shopfronts

We continue to work closely with the Letchworth Garden City Town Centre Partnership to **support town centre businesses** and promote shopping and leisure activities in the Garden City.

The partnership has recently re-launched its Shop Letchworth brand, which featured in a **major advertising campaign** in the run up to Christmas.



The Partnership, in association with Garden Square Shopping Centre were responsible for the hugely successful Christmas Lights switch on, **attracting the largest ever crowds.**

Plans for the coming months include a new publication '**Shop**' and a series of exciting events.

'Shop' will be distributed far and wide to **over 110,000 homes and businesses**, promoting the Garden City as the ideal destination for local shopping and leisure activities.

Town Centre events kick off in earnest at **Easter and run throughout the rest of the year.**

Look out for **May Day entertainment, a Space and Science Fiction Week, regular farmers' markets and a summer festival.**



www.shopleetchworth.com

Now trading at...

We continue to welcome new retailers to the town and assist businesses to move out of the redevelopment areas.



Bad Girl Ink
55 Leys Avenue



Chicks & Alice's Wonderland
13 The Arcade



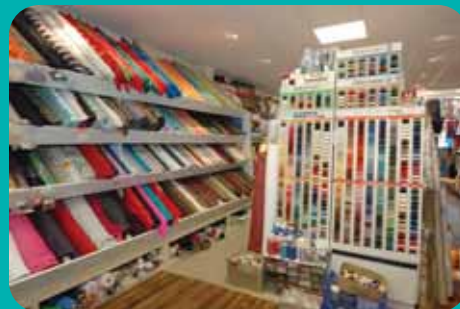
Framework Photographic
3 The Arcade



On Your Travels
65 Station Road



Moore's Pharmacy
14 Leys Avenue



Summan Fabrics
7 Arena Parade

Governing the Foundation

Board of Management

J A Scouller

C Chatfield

(re-appointed 27 March 2008)

Mrs H S Edwards-Hedley

K F Emsall*

Mrs L Kercher

(re-appointed 27 March 2008)

Mrs L A Needham**

P Palmer

(re-appointed 27 March 2008)

R Williams

* Deputy for Hertfordshire
County Council

** Deputy for North
Hertfordshire District Council

Alan Scouller was re-appointed as Chairman of the Foundation by the Board of Management on 8 April 2008.

At its meeting on 9 September 2008, the Board decided to create a new position, that of Vice-Chairman of the Foundation. In the election, taking place at the Board's 14 October meeting, Colin Chatfield was elected.

At the 13th AGM, to be held on 26 March 2009, two from Alan Scouller and or Heather Edwards-Hedley and or Bob Williams retire by rotation and are eligible to stand for re-election to the Board of Management.

At the General Meeting held on 25 September 2008, the Governors resolved to increase the size of the Board to nine members with effect from the 2009 AGM.

Directors

S M Kenny

Director General

Mrs M Hands

Director of Property

A S Howard

Director of Marketing and PR

I Webb

Director of Finance

Governors

J A Scouller (Chairman) [G]

W G Armitage [E]

T Brazier [G]

C Chatfield [N]

Dr R Clarke [N]

I Cotterill [G]

A H Creighton

(appointed 14 Oct 2008) [N]

M Durrant [N]

Mrs H Edwards-Hedley [G]

K F Emsall*

Dr R Fox [E]

G Fraser-Williams [G]

W J Hall [E]

D Johal

(re-appointed 1 Oct 2008) [G]

Mrs L Kercher [E]

P Lennie

(re-appointed 1 Oct 2008) [G]

A Maynard-Smith

(retired 30 Sept 2008)

Mrs L A Needham**

Mrs S Needham

(resigned 6 June 2008)

P Palmer

(re-appointed 1 Oct 2008) [N]

Mrs M N Pierce

(appointed 12 Feb 2008) [N]

M Pisapia

(appointed 11 Nov 2008) [G]

Miss D Poynter [E]

Mrs M Protani [G]

G J Secker

(appointed 11 Nov 2008) [G]

D Shirley [N]

A R Stone [N]

Mrs S Turner

(re-appointed 1 Oct 2008) [G]

M J Underwood

(appointed 11 Nov 2008) [G]

S P Vilas [G]

D Walker [E]

R Williams [G]

[E] Elected [G] General [N] Nominated

The Garden City Meeting

Thursday 14 May, The Spirella Ballroom,
7pm for 7.30pm

You are invited to attend the 14th annual Garden City Meeting.

- Come along, ask your questions, have your say and meet the Foundation's Governors and Board of Management.
- Find out what has been delivered since the last meeting. Hear about the Foundation's plans for the future.



Broadway Cinema



Now 100% owned by the Foundation, Broadway Cinema has added a Screen Four, disabled access to all screens and seen its main Screen One refurbished.

Getting in Touch

Letchworth Garden City Heritage Foundation

Suite 401, The Spirella Building,
Letchworth Garden City, SG6 4ET

T 01462 476007

info@lgchf.com

www.lgchf.com

The Foundation is an Industrial and Provident Society with charitable status. Registered No 28211R.

Subsidiary undertakings

- Garden City Technologies Ltd
- Letchworth Garden City Farms Ltd
- Letchworth Cottages & Buildings Ltd
[LCB] – a charitable Industrial & Provident Society, Reg No. 18705R
- Letchworth Garden City Services Ltd.

Broadway Cinema Ltd

24 hr programme information

T 01462 681223

Credit card bookings

T 01462 681088

www.broadway-cinema.com

Ernest Gardiner Day Hospital

T 01462 670955

www.lgchf.com/dayhospital

First Garden City Heritage Museum

T 01462 482710

www.lgchf.com/heritage-museum

Minibus Service

T 01462 481131

www.lgchf.com/minibus

Plinston + Spirella Ballroom

T 01462 672003

www.plinston.com

www.spirellaballroom.com

Standalone Farm

T 01462 686775

info@standalonefarm.com

www.standalonefarm.com

Tourist Information Centre + Shopmobility

T 01462 487868

tic@letchworth.com

www.letchworthgc.com

Looking Ahead

with Letchworth Garden City Heritage Foundation



The main focus in the coming year will be the continued revitalisation of Letchworth town centre through major investment and development.

Objectives for 2008-09

- 1 Implement the Street Scene improvement.
- 2 Submit a planning application in respect of the major redevelopment of The Arena.
- 3 Publish and implement the new 'Design Standards' for residential areas.
- 4 Sustain funding for the Foundation's charitable objects.

Look out for exciting events taking place in the town centre this summer

Traditional May Day Entertainment

Saturday 2 May

Leys Square 1.00pm to 3.00pm

Space & Science Fiction Week

Friday 8 – Saturday 16 May

Letchworth Festival

Saturday 25 July – Sunday 2 August

Farmers' Markets

Plus regular Farmers' Markets on

18 April, 16 May, 20 June and 18 July.

Leys Square 9.00am to 1.00pm



Letchworth
World's First Garden City

www.shopletchworth.com

Shop Letchworth is a brand of Letchworth Garden City Town Centre Partnership Ltd, an independent organisation.



Heritage Open Days

Explore some of Letchworth Garden City's amazing buildings

On 12 & 13 September many of Letchworth Garden City's historic buildings will be open to the public.

For advance information about the event or to join the mailing list visit www.lgchf.com/hods or call 01462 476057

The Spirella Building,
Letchworth Garden City

GET INVOLVED!

NORTH HERTFORDSHIRE
VOLUNTEERS FAIR

10 & 11 October 2009

Featuring a host of not-for-profit, charity and volunteer organisations showcasing fantastic opportunities to **Get Involved!**

If you're interested in exhibiting, or would like to pre-register for this free event, please contact Sarah Crombie on 01462 476054

www.lgchf.com/getinvolved



Letchworth Garden City Heritage Foundation is an Industrial and Provident Society with charitable status. Registered No. 28211R

www.lgchf.com